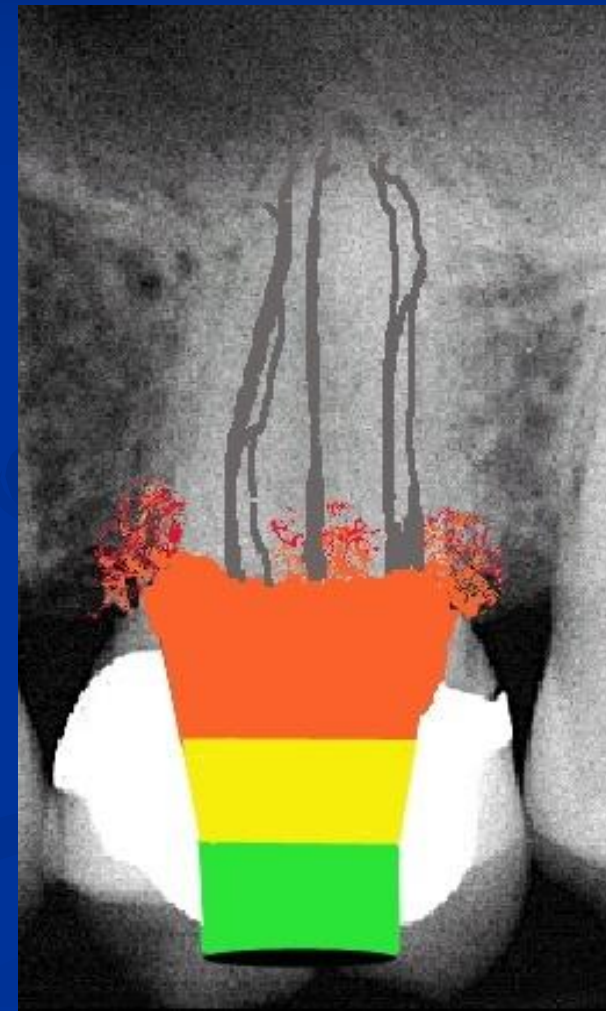
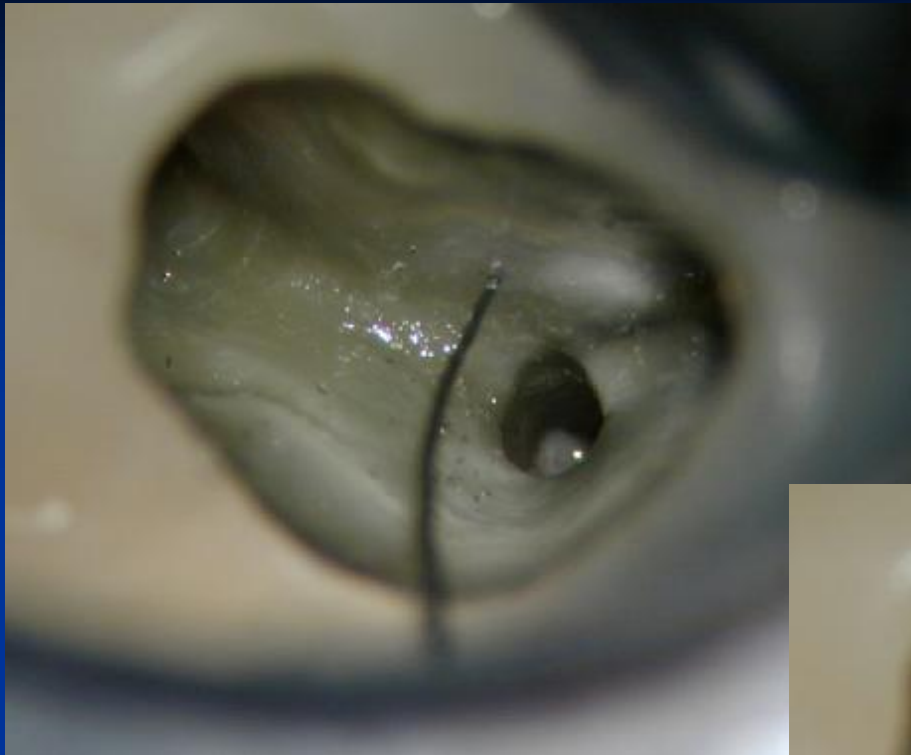


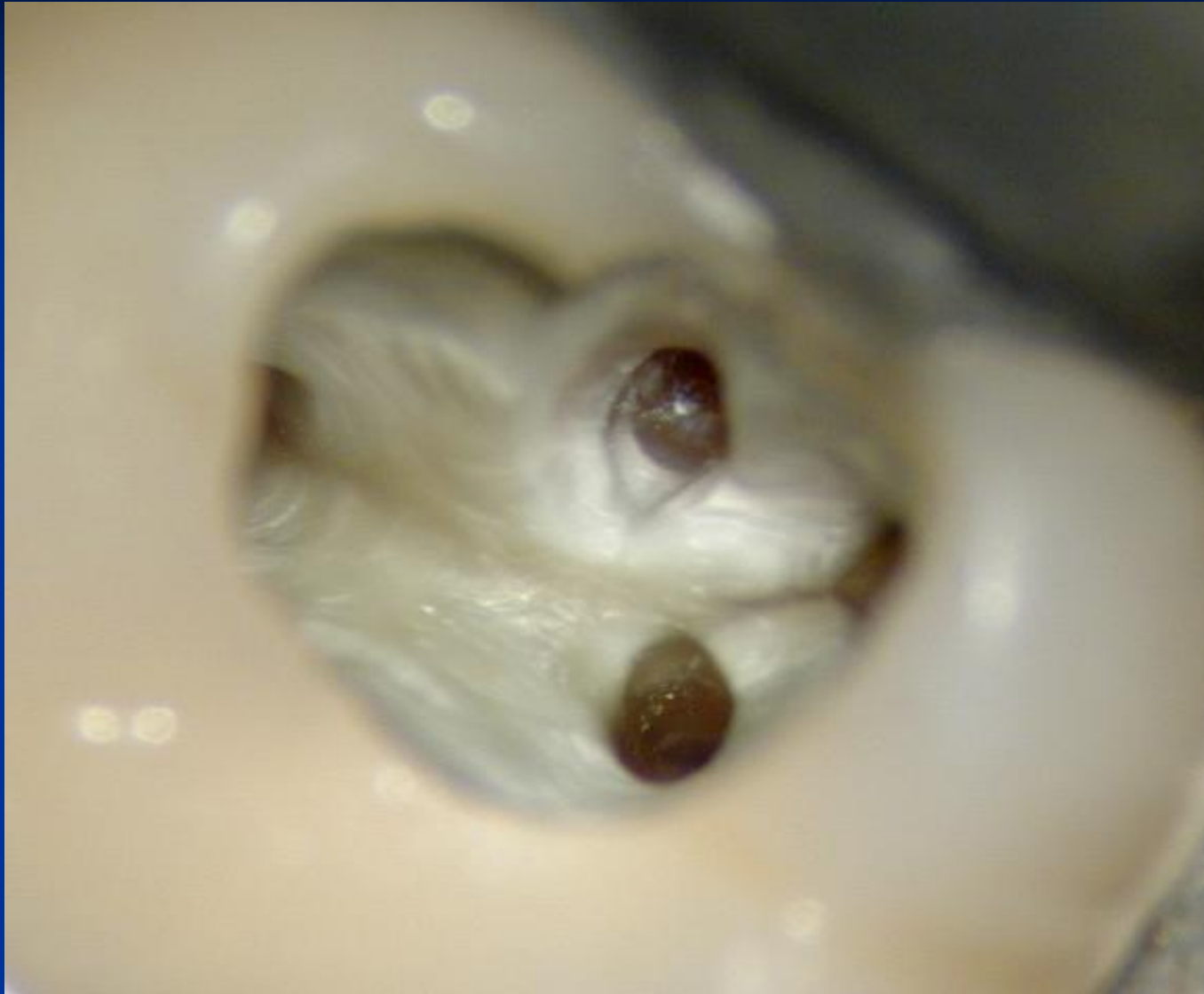
Is a Conservative Access Really Conservative?



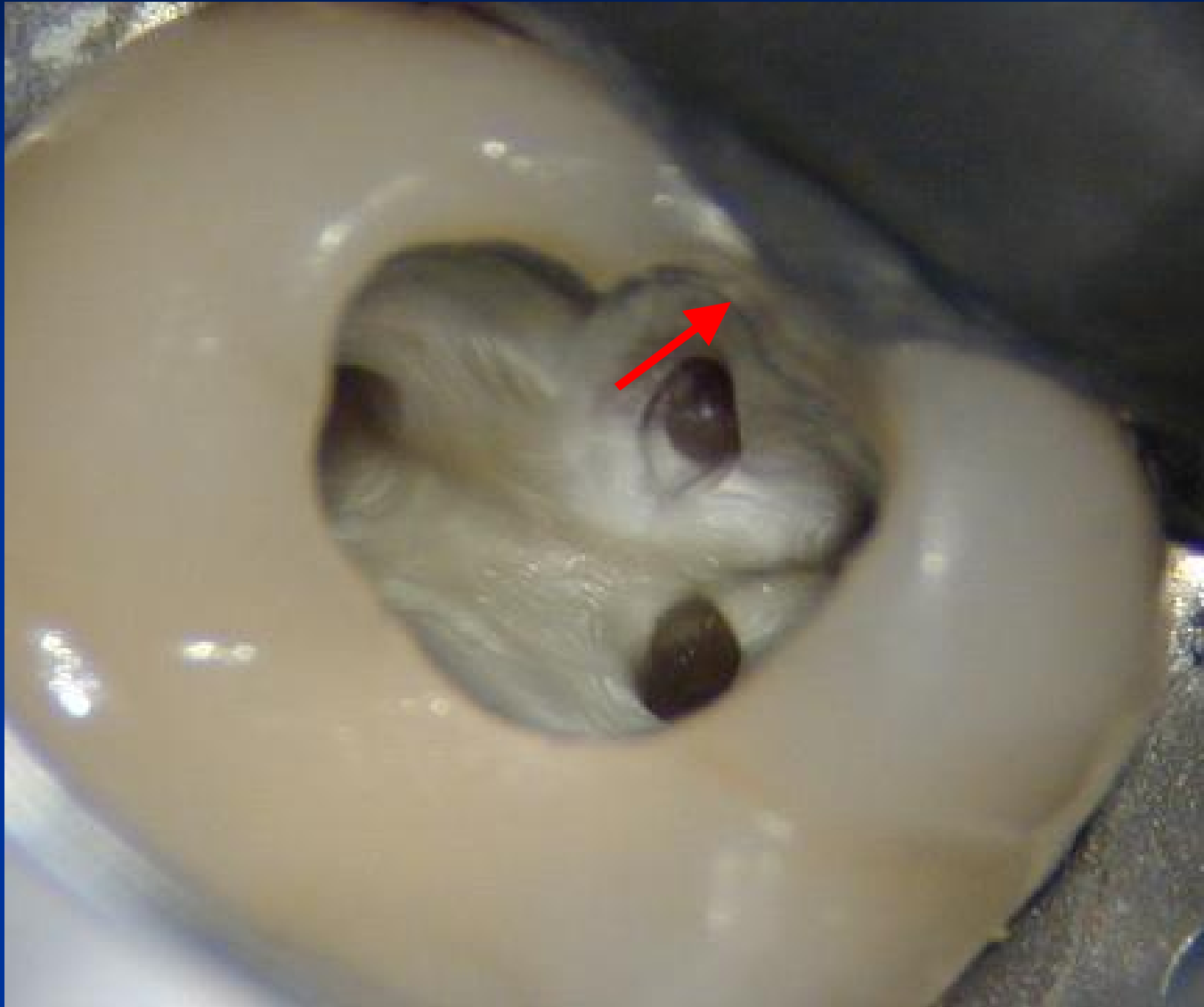
“SEE” (*Strategically Extended Endodontic*) Access

- n Strategic extension of an endodontic access in areas that do not unnecessarily weaken a tooth designed to facilitate:
 1. Direct Line Access and convenience form
 2. Discovery of internal root canal system anatomy
 3. Allows thorough flushing of debris/contaminants
 4. Clinically effective cleaning and shaping of the apical third
 5. Clinically effective obturation.





MB2 Preparation



DB2 Preparation

