

Roots Summit 3, Anaheim

Dr. Winfried Zeppenfeld

Holm 55

24937 Flensburg
Germany



Vertical crack in tooth # 11 (23 FDI) , no pain, but patient has had a funny feeling for several years in the middle of the root just below the attachend gingiva.

Probing with normal pressure is rather unspectacular



X-ray shows a root canal filling with a fractured lentulo spiral at the tip

I intended to do an apico and an adhesive repair of the crack



There was a crack all the way down the root and a resorption area in the middle of the root, where the patient had had the funny feeling



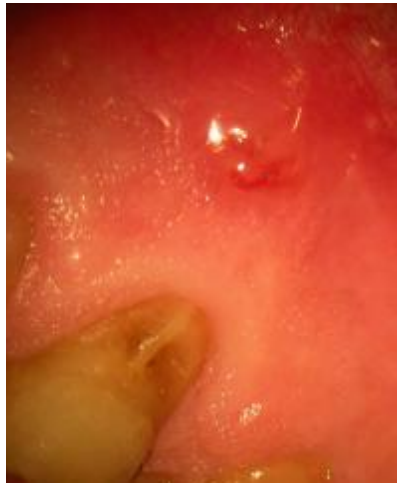
I resected the root tip, opened and cleaned the crack with a fine diamond bur, etched, bonded with PQ1, and filled the crack and the retro-cavity with Tetric flow



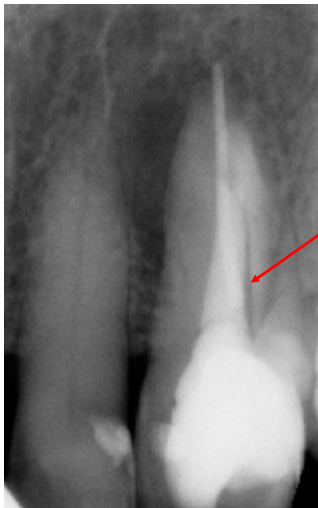
5 months later, it looks fine and the patient feels fine too



Five months later, the lesion has almost completely healed



Nine months later: tooth is mobile, sinus tract in the middle of the root



X-ray shows large lateral translucency

Translucency in the root indicates a crack



I reentered the case to see what was going on

Picture shows the repaired root

and a new fracture line on the mesial aspect of the repaired area going all the way over to the palatal side: the root was split right in half.



I sutured without doing anything else, prepped the bicuspid for a bridge 2 weeks later and had a bridge made which was to be fixed adhesively to the lateral with ribbon, because I did not want to prep that virgin tooth



Cemented bridge

Palatal view of the bridge connected to the lateral with Ribbon reinforced composite

